



## Laser Inclinomometer Set



### Contents:

<p><b>X1</b></p> 	<p><b>X2</b></p> 	<p>1x POWER SUPPLY with PLUG UK-US-EU-AU/NZ</p> <p>2x EtherCON Coupler NEUTRIK NE8FF</p>
--	---	--

**Weight: 7.3 kg / 16.1 lb**

## IMPORTANT SAFETY INSTRUCTIONS

- Read and understand this manual.
- Follow all safety warnings.
- Follow all instructions.
- Never use any third-party equipment or unrecognized working practices with this product.

- Laser Safety

Lasers are capable of producing light which when viewed under certain conditions and / or at certain power levels can lead to permanent eye damage. Never look into any laser beam. Avoid unnecessary exposure to laser beams. The product must not be used hand held. It must be securely mounted on a stable, safe, smooth and flat surface by authorized personal only.

"CAUTION – USE OF CONTROLS OR ADJUSTMENTS OR PERFORMANCE OF PROCEDURES OTHER THAN THOSE SPECIFIED HEREIN MAY RESULT IN HAZARDOUS RADIATION EXPOSURE

- Heat

Do not operate the product near to any immediate heat source.

- Water and Moisture

Do not expose the product to rain, sea spray, steam, water shower etc. for long periods of time. Do not immerse in water or allow coming into direct contact with water. This would cause irreversible damage to the electronic components and corrosion to hardware.

- System and rigging inspection

All system components must be inspected prior to use. Any defects must be dealt with and repaired by qualified service personal before continuing with use of the product

- Cabling

Ensure all cabling used is wired correctly and is fault free. If in doubt, contact the manufacturer. Practice good cable management. Avoid trip hazards

- Mounting instructions

Do not place the product in or on an unsafe and or unstable surface, bracket, tripod, fixture or stand. The product may fall and be seriously damaged or may cause serious human injury or death. Any mounting of the product must follow the manufacturer's instructions given in this manual and use only approved methods and equipment and accessories

- Power supply

Please use only the recommended power supply for the product. This system uses a 7.2v NiMH rechargeable battery which can be recharged via the in-built battery charger. A switch mode AC – DC PSU is also available to charge and power the display.

- Service and Maintenance

Conditions where immediate service is required:

- The product was exposed to moisture or water.
- The product was dropped, or the enclosure was damaged.
- The product does not operate properly.

Do not attempt to service or modify the unit. Please return to the manufacture for repair and service. Attempting to service or modify the unit could result in permanent damage to the product and or cause injury to the user or others near the unit

- User manual

Keep this manual in a safe place for the lifetime of the product. This manual forms an integral part of the product. This manual must be shipped with the product if resold. Any changes or modifications made to the product must be recorded and records shipped with this manual if resold.



nexo-sa.com

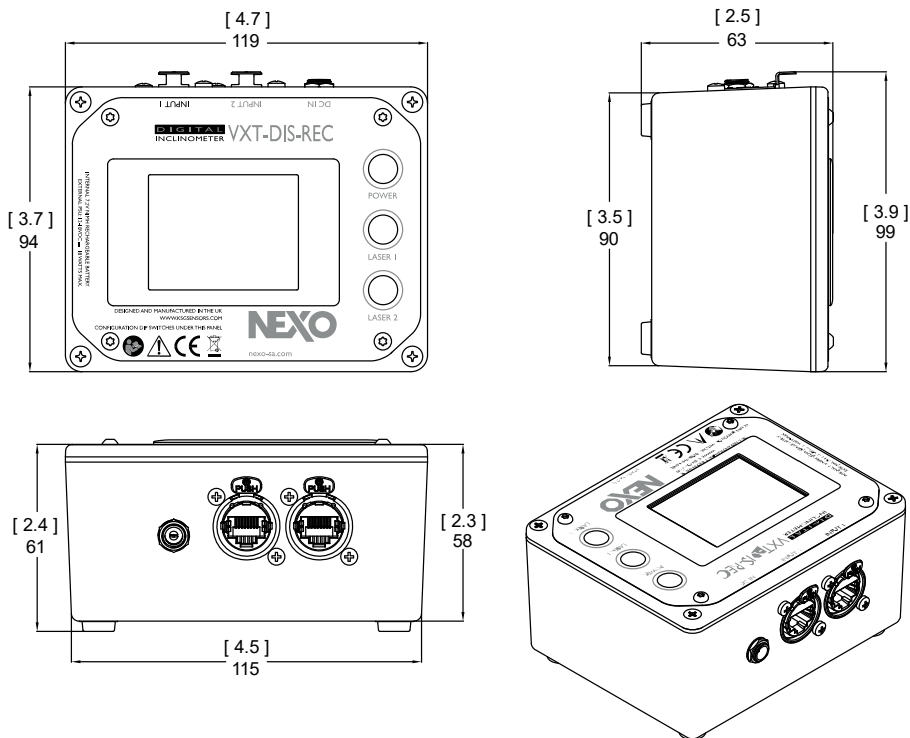
ZA du Pre de la Dame Jeanne  
60128 PLAILLY - France

- Read this document before using.
- Keep this document.
- Observe all warnings and cautions.

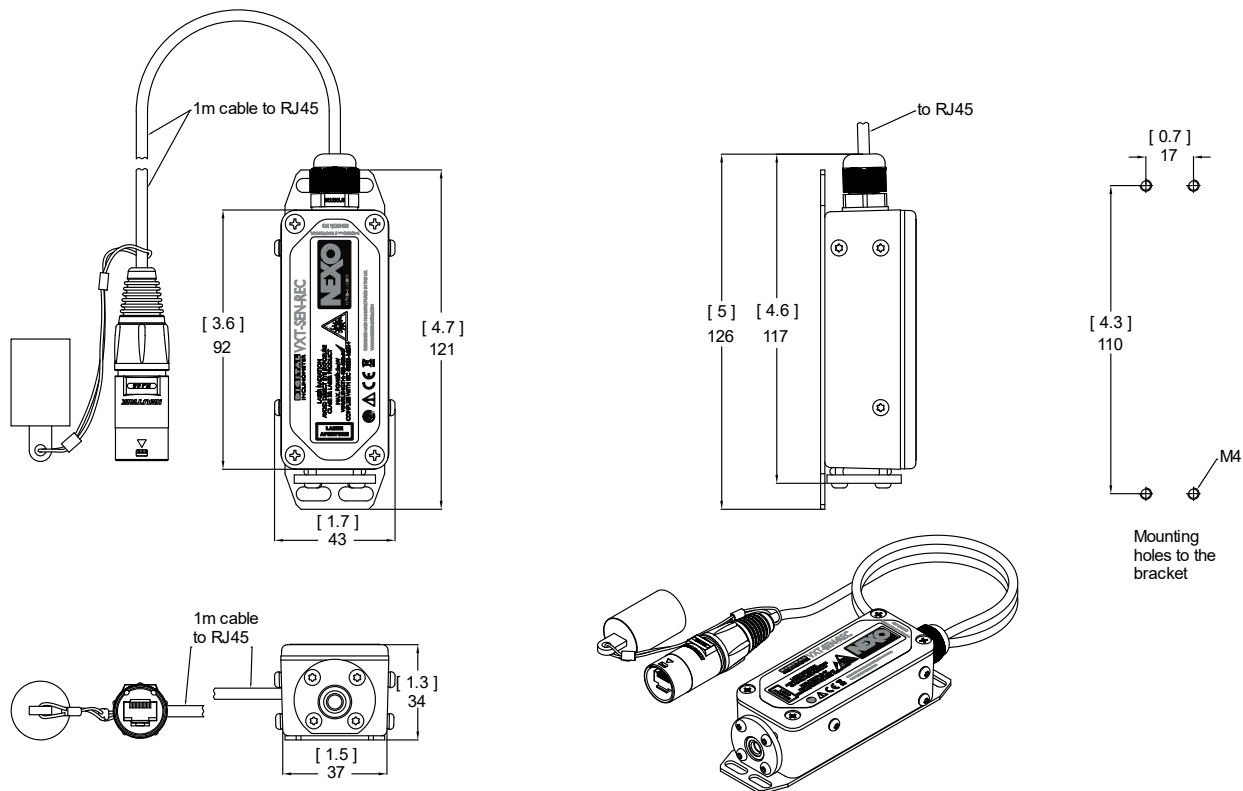


## Dimensions:

### VXT-DIS-REC



### VXT-SEN-REC



# NEXO

nexo-sa.com

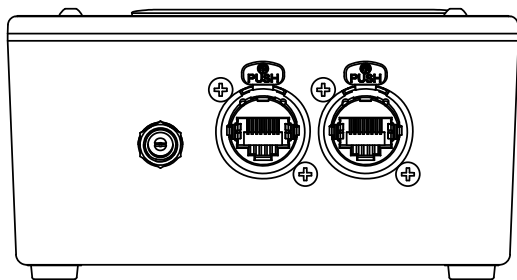
ZA du Pre de la Dame Jeanne  
60128 PLAILLY - France

- Read this document before using.
- Keep this document.
- Observe all warnings and cautions.



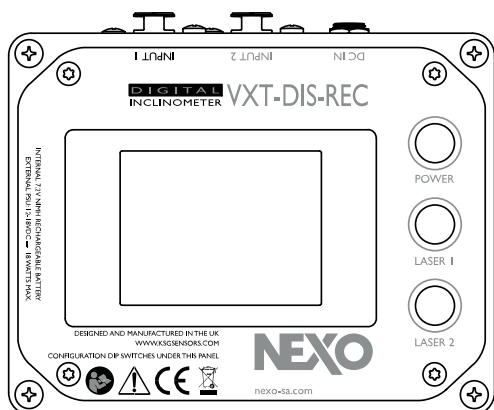
## Use:

- Assembly VXT-SEN-REC on NEXO plate
- Use of VXT-DIS-REC



2 RJ45 etherCON for VXT-SEN-REC

1 connector 2.5mm for external power supply  
15 – 18 V DC



## POWER

Press to turn on, red light. Press to turn off.  
Automatic shutdown after 5 minutes

## LASER 1

Press to turn on, green light. Press to turn off.  
Automatic stop after 3 minutes.

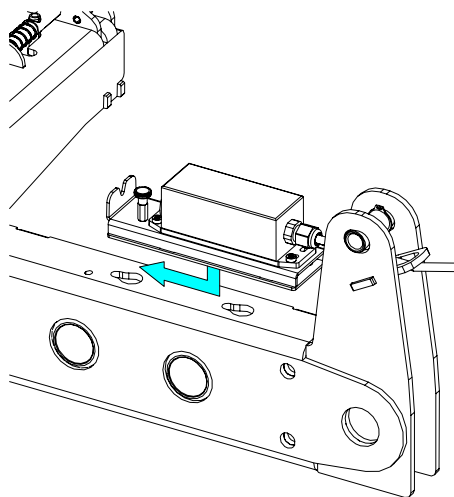
## LASER 2

Press to turn on, green light. Press to turn off.  
Automatic stop after 3 minutes.

## Use:

### Implementation

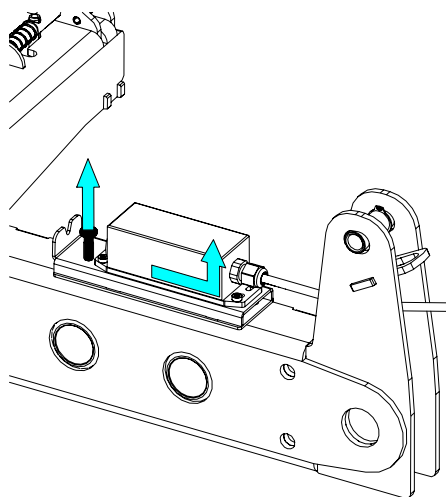
Insert the assembly, push forward until it locks.



### Removal

Pull the lock up.

Pull the assembly backwards



# NEXO

nexo-sa.com

ZA du Pre de la Dame Jeanne  
60128 PLAILLY - France

- Read this document before using.
- Keep this document.
- Observe all warnings and cautions.

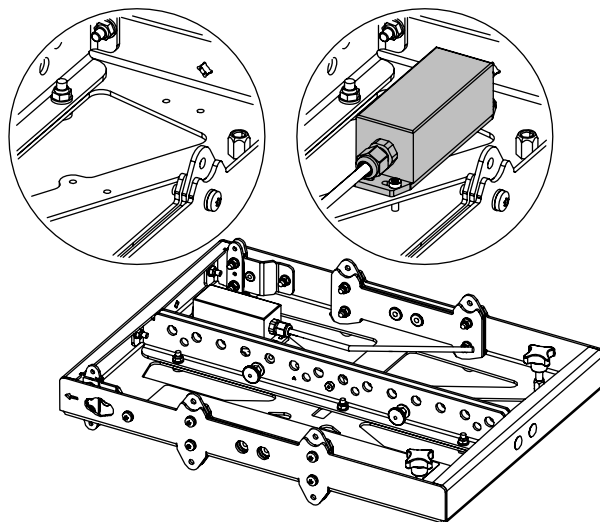
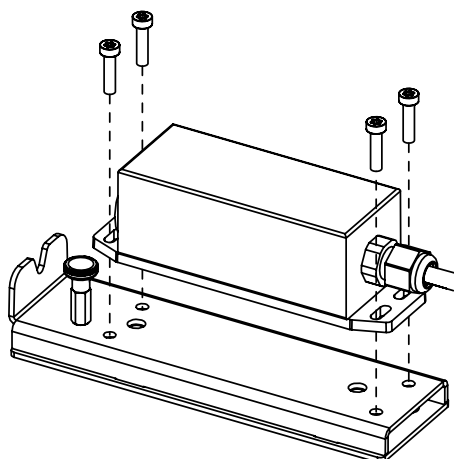


**With GEOM:**

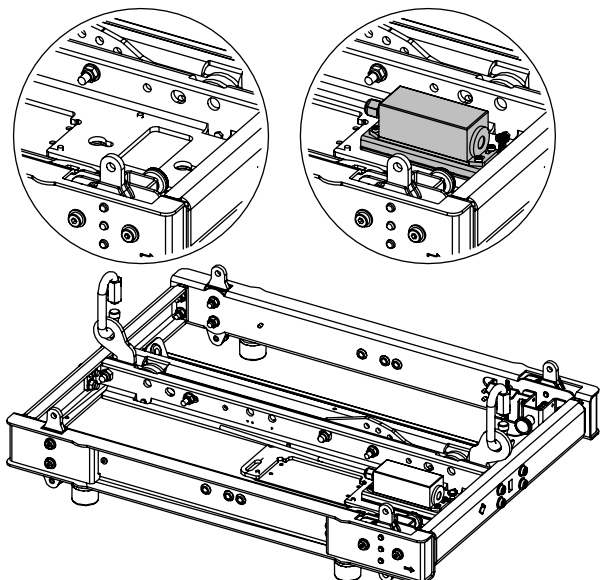
**With VNT-BUMPM6**

Remove the 4 screws to remove the inclinometer.

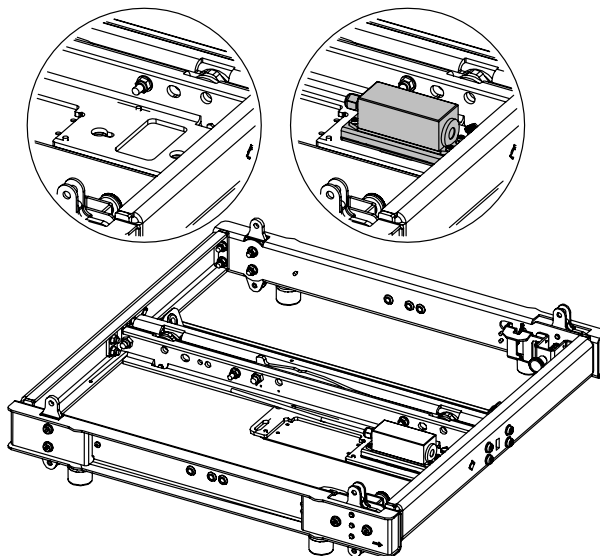
Place the inclinometer on VNT-BUMPM6, use the 4 screws.



**With VNT-BUMPM10**



**With VNT-BUMPM12**



**NEXO**

nexo-sa.com

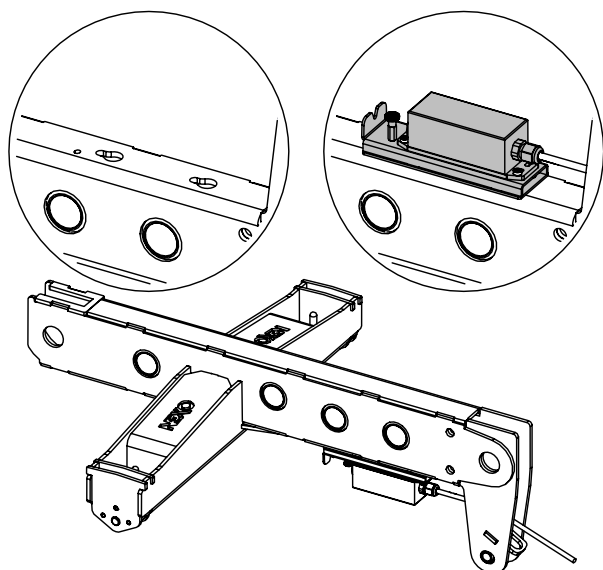
ZA du Pre de la Dame Jeanne  
60128 PLAILLY - France

- Read this document before using.
- Keep this document.
- Observe all warnings and cautions.

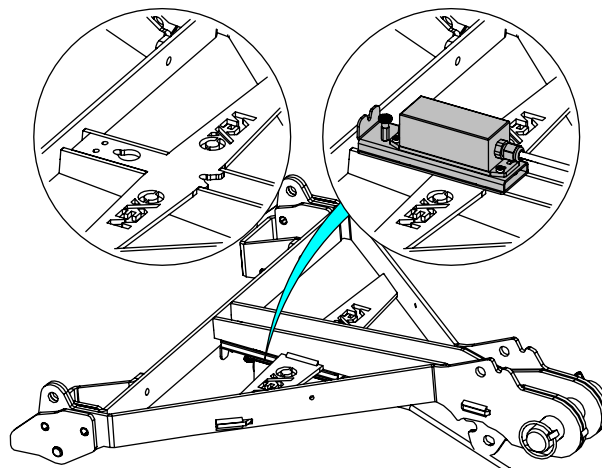


With STM:

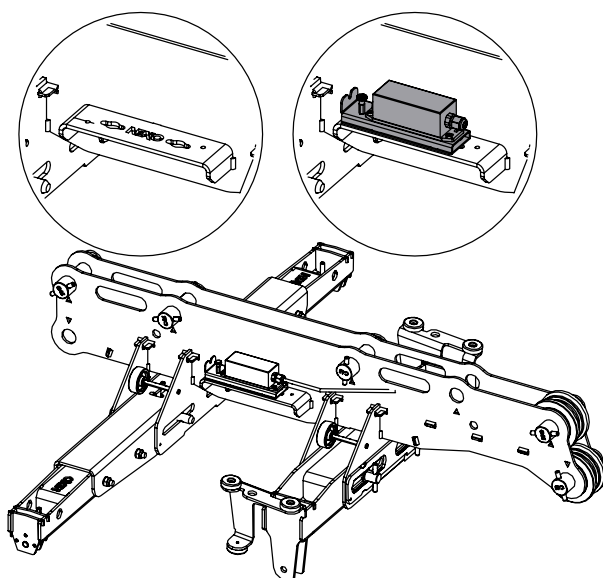
With STT-XBOW



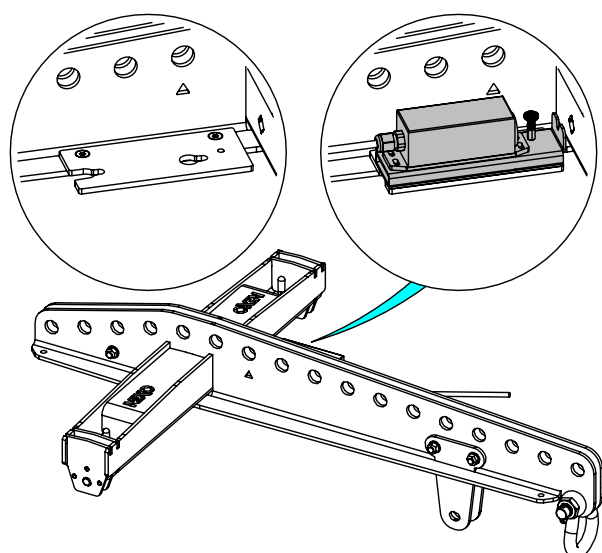
With STT-BTBUMPER



With STT-LBUMPER



With STT-LBUMPM28



**NEXO**

nexo-sa.com

ZA du Pre de la Dame Jeanne  
60128 PLAILLY - France

- Read this document before using.
- Keep this document.
- Observe all warnings and cautions.



**Technical specifications:**

Model	VXT-DIS-REC
Display	2.4" 320 x 240 Colour TFT Screen
Accuracy	0.1%
Controls	Power Switch – 2x Laser Switch
Indicators	Power, Low Battery and Charging indicator
Connectors	RJ45 etherCON – 1x 2.5mm Extnal DC Power Input
Power Requirements (provided)	1x Internal 7.2vNiMH Rechargeable Battery <sup>1</sup> (built in battery charger) or 15-18vdc External PSU
Operating Temperature	0° to +40°
Finish	Powder Coated – Textured Matt Black
Dimensions	120mm x 94mm x 53mm (L x W x D)
Weight	550 grams – 1.2 lb (Including Batteries)

<sup>1</sup>: Before disposing of your product, be sure to remove the NiMh battery and take it to a reprocessing center.

Model	VXT-SEN-REC
Range	±30°, one axis, vertical or horizontal mounting
Accuracy	< ±0.1%
Non Linearity	< ±0.71%
Visual Reference Indicator	< 5mW Class 3R 532nm laser (green)
Connectors	RJ45 etherCON with 1m flying cable
Power Requirements	9 – 18 vdc supplied by VXT-DIS-REC
Operating Temperature	0° to +50°
Finish	Powder Coated – Textured Matt Black
Dimensions	130mm x 41mm x 34mm (L x W x D) 156mm x 48mm x 57 mm with NEXO plate (L x W x D)
Weight	250 grams – 0.6 lb

External PSU provided	ACM18US15
AC Input Plugs	UK – USA – Australian – European
Output power	18.0 W
Output Voltage	15.0 V
Output Current	1250 mA
Input Voltage	90 – 264 VAC
Input Frequency	47 – 63 Hz
Operating Temperature	0° to +60°
Weight	160 grams - 0.35 lb



nexo-sa.com

ZA du Pre de la Dame Jeanne  
60128 PLAILLY - France

- Read this document before using.
- Keep this document.
- Observe all warnings and cautions.



## Conformity

Kiwi Sound Guy Ltd  
Trading as KSG  
117 Merrylee Road, Glasgow, G43 2RB, United Kingdom of Great Britain  
+44 (0)778 6342 940 [info@ksg-ltd.co.uk](mailto:info@ksg-ltd.co.uk)

Company No. SC 375159

EEE Producer Registration Number: WEE/KF2822WZ

Kiwi Sound Guy Ltd. Declares that their:

RECLINE Dual Axis Remote Inclinometer System: Dual Axis Sensor Unit, Dual Axis Display Unit is classified within the following EU Directive:

Electromagnetic Compatibility Directive 2004/108/EC

and further conforms to the following EU Harmonised Standards:

EN 61000-6-3:2007

EN 61000-6-1:2007

EN 60825-1: 2007

and conforms to the following Safety Regulations:

The Supply of Machinery (Safety) Regulations 1992, as amended by the Supply of Machinery (Safety) (amendment) Regulation 1994

The Supply of Machinery (Safety) Regulations 1992, as amended by the Supply of Machinery (Safety) (amendment) Regulations 2005

Ben Phillips  
Director

- NEXO cannot accept responsibility for accidents caused by any factor other than defects in this product itself.
- Please check the web site [nexo-sa.com](http://nexo-sa.com) for the latest update.

# NEXO

[nexo-sa.com](http://nexo-sa.com)

ZA du Pre de la Dame Jeanne  
60128 PLAILLY - France

- Read this document before using.
- Keep this document.
- Observe all warnings and cautions.

