

# NEXO

# NeMo

Version 2.4 for macOS

in **10** little steps

## 1 Create an Offline Session

Create a new session. You will be able to open and edit it later. You can share it with other users of NeMo for macOS or for iOS.

Add offline **device prototypes**. Make up **groups** of devices, and **zones** of channels.

Choose **pictures** for the background, and make them a little blurry.



## 2 Choose Presets

From the Network tab or the Selector, select devices, groups, channels or zones.

Go to the Control tab and to the Setup Picker.

Build and recall presets, from a NEXO 4-channel library or channel per channel.



# 3

## Prepare Your Devices' Settings and EQ

Go to the Control tab.

Select devices, groups, channels or zones from the Selector.

Patch inputs to processing channels.

Edit gain, delay, etc. on:

- One channel,
- Several channels, absolute or relative.

Mute and solo (NXAMP only).

Add and edit up to 8 EQ bands per channel.

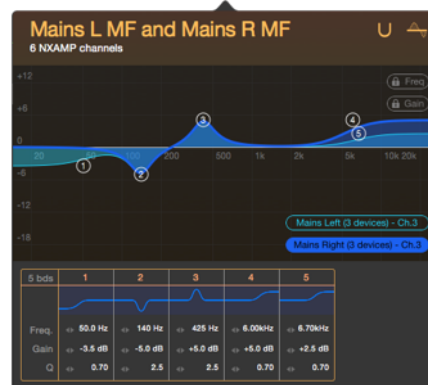


### Orange/Mult. = "multiple values"

When a parameter (e.g. volume ch.1) is not the same for all the selected devices.



Smart slider: displays marks for all the different values.



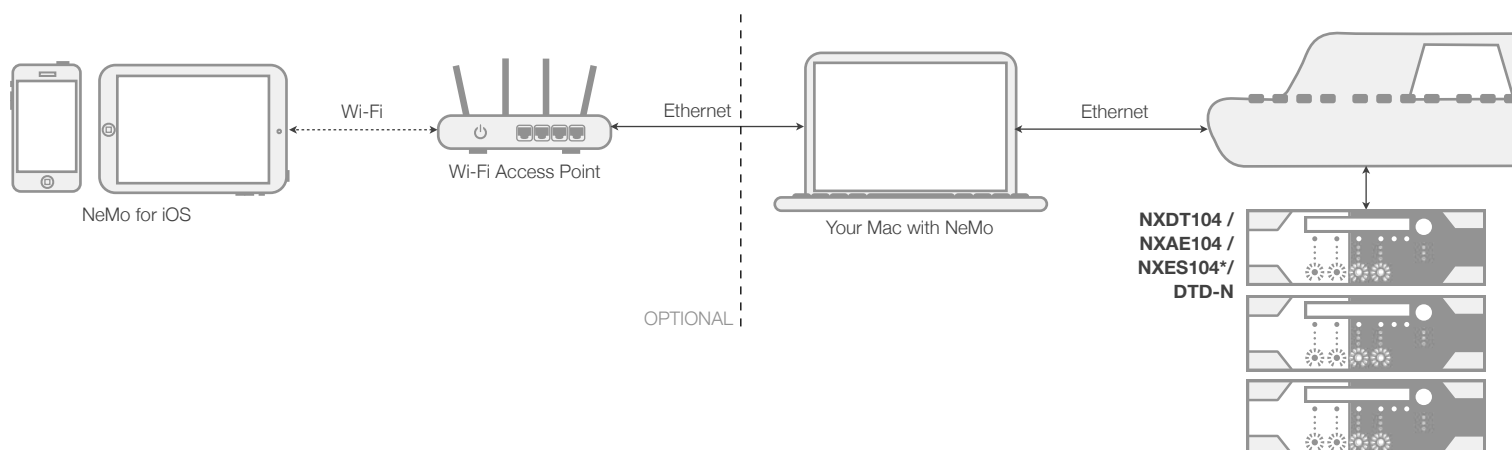
# 4

## Set Your Network Up

Update your NEXO devices and their remote control cards with the latest firmware version.

Set up secured and robust Wi-Fi access points, with a unique DHCP server.

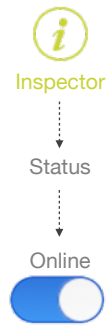
**\*NXES104 only:** Install AVS-Monitor on a computer with Windows (PC, or Mac with virtual machine). Open AVS-Control panel and turn on AVS-Service.



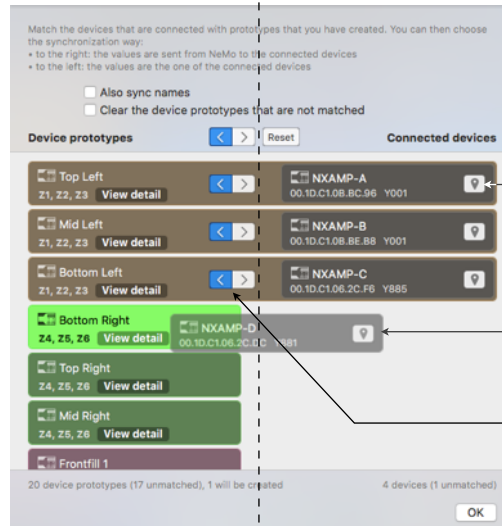
# 5 Go Online

When you go online and devices are detected, NeMo automatically associates them with offline prototypes, or suggests to:

- Send values from NeMo to connected devices.
- Take values from connected devices.
- Perform a custom matching.



Custom matching



Locate

Drag and drop to associate a device and a prototype

Choose association way (whether to take values from or send values to online devices)

Device prototypes

Online devices

# 6 Check up Your System

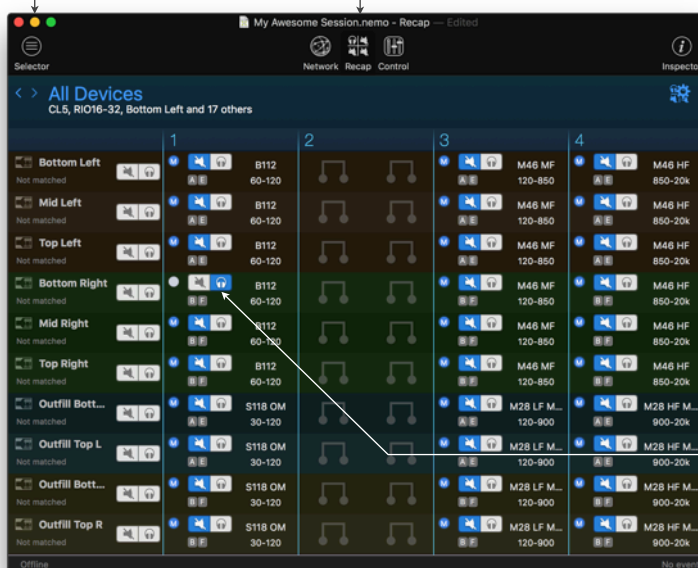
Go to Recap.

Choose to display mute/solo.

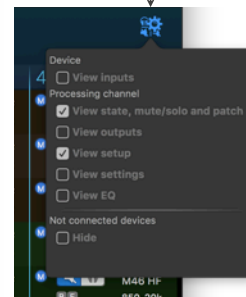
Check every channel by soloing it.

Select objects

Go to Recap



Select what to view



Solo channels

# 7 Save a Scene

## NXAMP only

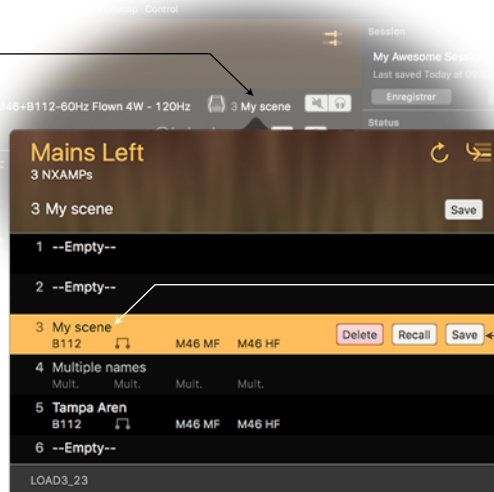
Select devices or groups.

Go to the Control tab and to the Scenes popover.

Select a slot and save the scene.

Later, you will be able to recall this scene and/or paste it to other NXAMPs.

Current scene. Click to show Scenes popover.

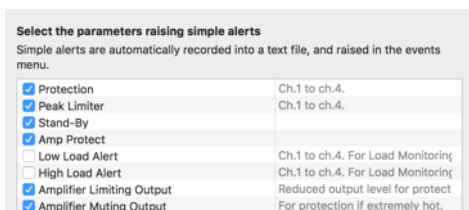


Type a name

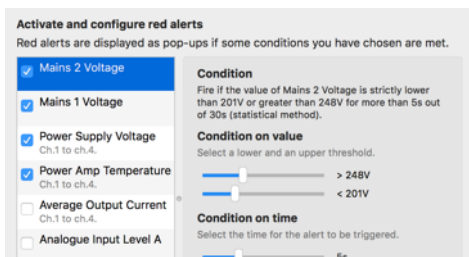
Press [Save]

## Preferences

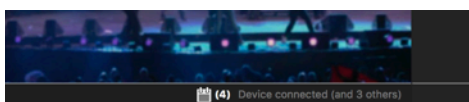
Configure alerts



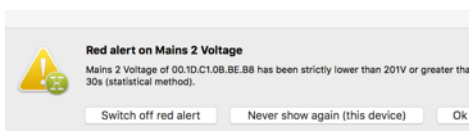
Configure red alerts



To consult the Events menu:



When a red alert has been triggered:



# 8 Set up Alerts and Record the Log

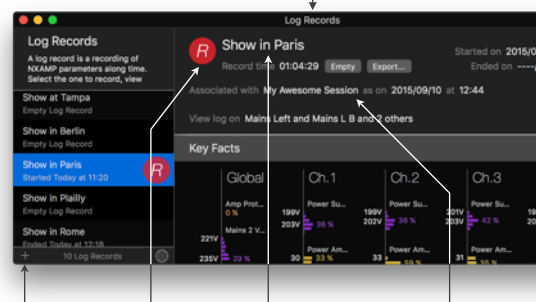
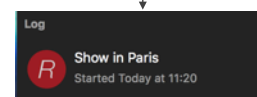
Go to the preferences.

In Configure Alerts, choose the alerts to show in the Events menu.

In Configure Red Alerts, activate and set up alerts to show as pop-up messages.

To record the log, reveal the Inspector, go online, choose a Log Record, and press [R].

To setup and record the log:



Create if needed and select a Log Record

Tap to start recording

Rename the Log Record

Associate the Log Record with your session

From the Config mode:  
press and hold



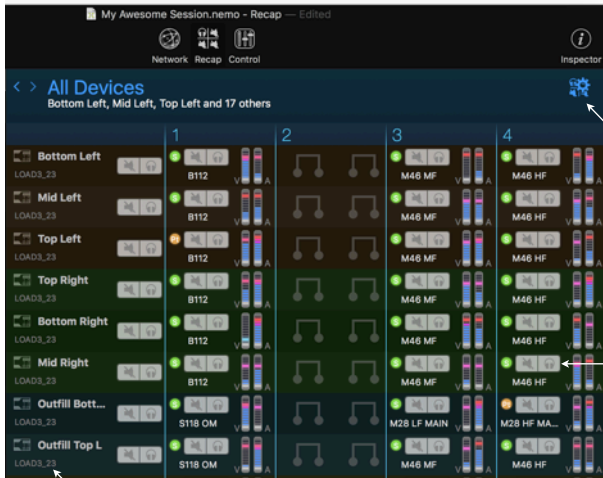
9

## Let the Show Begin

Switch to the Live mode. Components are disabled. You can go to the Preferences to configure the Live mode.

While the show is ongoing, you can go to the Recap tab.

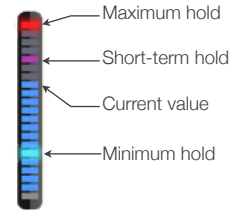
When the show is over, go to the Log view and press [R] to stop recording.



Select what to view  
(VU-meters, setup,...)

Components are disabled.

Click to reveal load, IP, MAC or Dante ID



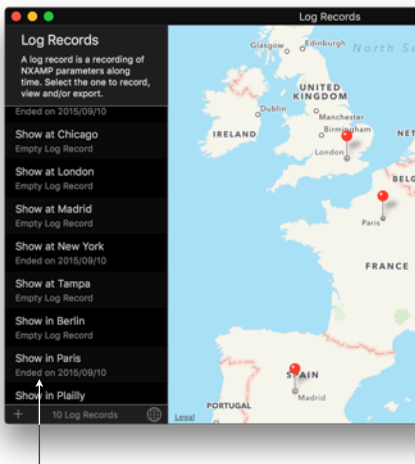
10

## Check-out the Log

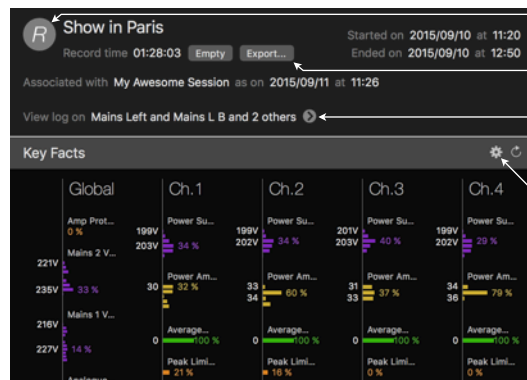
Go to the Log view.

Review the key facts and the history of the parameters of your choosing.

Export the log to process it in a spreadsheet.



Select a Log Record



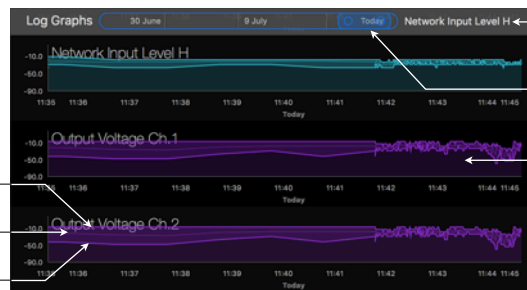
Stop recording

Export the log

Choose devices, groups or zones

Select Key Facts to display

	A	B	C	D	E	F
1	NEXO Nemo - Log					
2						
3	6 devices have been recorded.					
4	Devices	00:10:C1:06:NXDT104-062CEA (Y011)				
5	Parameter	Connected	Mains A Voltage	Mains B Voltage	Power Supply	
6	Date					
7						
8	08/04/2013 10:54	1	221	229	201	20
9	08/04/2013 10:55	1	221	229	201	20
10	08/04/2013 10:56	1	222	229	201	20



Choose parameters

Scroll and zoom through time.

Tap on a curve to display detail. Drag your finger along the curve.

Thanks for downloading and using NeMo! Please refer to the manual for further instructions and tips on how to use NeMo: <https://nexo-sa.com/products/nemo/>. Your feedback and comments are most welcome: [technical@nexo.fr](mailto:technical@nexo.fr). Rate the app! <http://appstore.com/nexosa>.

© 2020 NEXO SA. All rights reserved. [www.nexo-sa.com](http://www.nexo-sa.com). NEXO SA cannot be held responsible for damages caused by improper use of the devices, this software and its manual. The practices contained herein may not apply to every situation.

Apple, Mac, iPod Touch, iPhone and iPad are trademarks of Apple Inc., registered in the U.S. and other countries. EtherSound and EtherSound logo are trademarks or registered trademarks of Digigram S.A. Dante and Dante logo are trademarks of Audinate Pty Ltd. Wi-Fi is a registered trademark of Wi-Fi Alliance. Windows is a registered trademark of Microsoft Corporation. All other trademarks are the property of their owners.