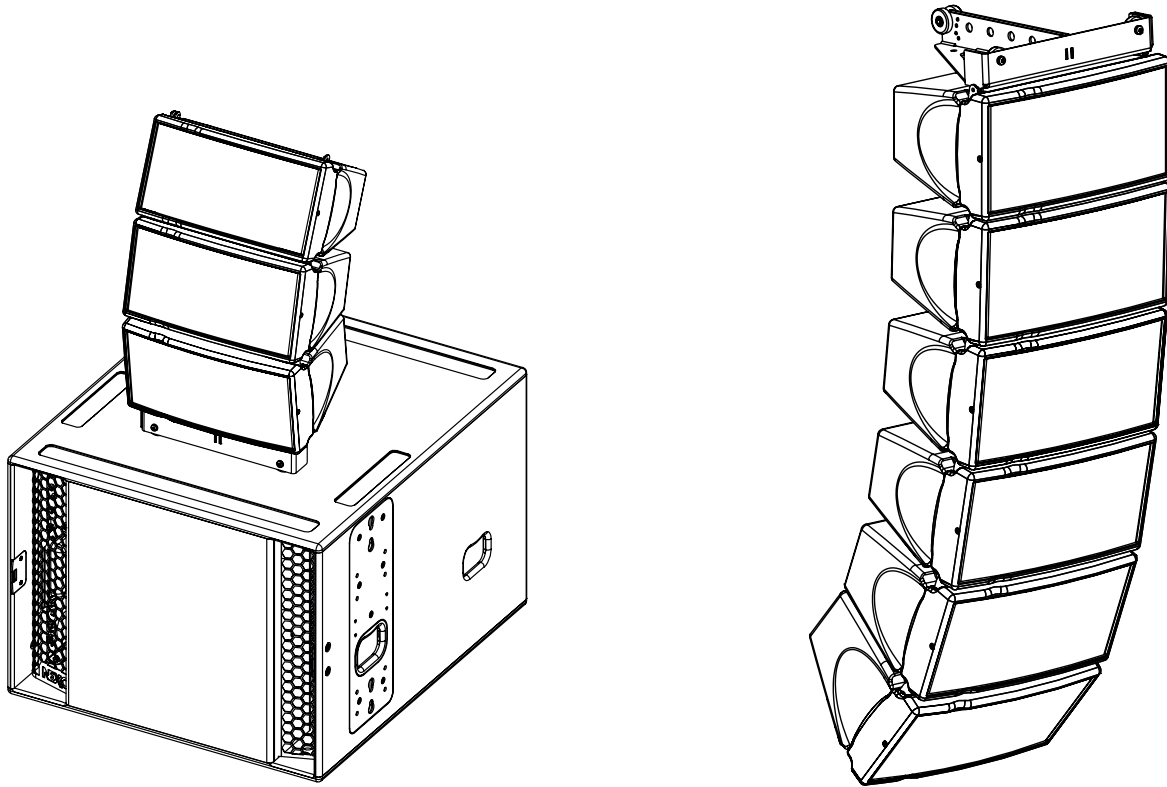


## Rigging Fix GEOM6

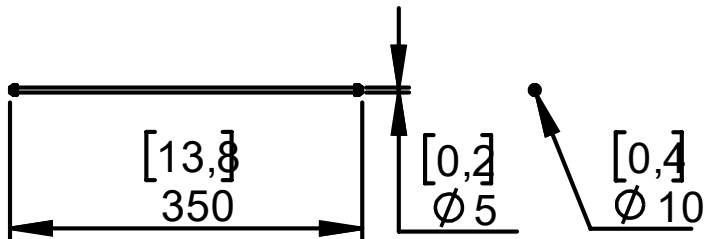


### Contents:

X1	X2	X2	X2

Weight: 0.2 kg / 0.44 lb

**Dimensions:**



**Use:**

<p><b>Front assembly</b> Insert the axis trough front holes, insert the washers and secure axis with nuts.</p>	<p><b>Rear assembly</b> Adjust at required inter-angle values, insert the screw and secure with the nut.</p>

- NEXO cannot accept responsibility for accidents caused by any factor other than defects in this product itself.
- Please check the web site [nexo-sa.com](http://nexo-sa.com) for the latest update.

**NEXO**

nexo-sa.com  
ZA du Pre de la Dame Jeanne  
60128 PLAILLY - France

- Read this document before using.
- Keep this document.
- Observe all warnings and cautions.

