



iD INSPACE
DEFINITION

Compact Sound Reinforcement System



Corporate &
Public Spaces



Theatres



Bars &
Restaurants



Houses of
Worship

nexo-sa.com

Thinking. Inside the box.

NEXO



Precision sound. Right where it's needed.

When it comes to creating the perfect immersive audio experience, directivity control is key to the superior performance of NEXO's compact ID Series speakers.



iD14

The super-compact ID14 is available in 100°x100° horn or 90°x140° asymmetric dispersion versions.

With a heritage in developing high-performance point source speakers and a history of pioneering and patenting groundbreaking developments in loudspeaker design, NEXO now focuses its expertise on a range of compact and super-compact loudspeakers designed to create a thrilling and immersive audio experience in even the most complex environments.

Achieving uniform audience coverage in complicated spaces is a familiar challenge, so NEXO makes flexible HF directivity options central to the design of the ID Series, equipping system designers and installers with the tools they need to set new performance standards while imposing a minimal visual impact on the interior design.

Available in Touring and Installation versions, compact ID24 and super-compact ID14 loudspeakers feature lightweight, weather-



Corporate & Public Spaces



Theatres



Bars & Restaurants



Houses of Worship



iD24

resistant, polyurethane cabinets. Thanks to their fully symmetric designs, there are no left or right versions of the ID24 and ID14, so all speakers in the inventory can be the same. The ID14 employs a custom-designed coaxial driver with a 1.3" voice coil for the 4" LF component and a 1.4" diaphragm for the HF motor, delivering smooth, clean sound and impressive power. To ensure maximum versatility, the ID14 can be specified with either 100° x 100° or 90° x 140° HF dispersion.

The larger ID24 uses twin 4" drivers in a unique V-formation, and features an ingenious mechanism which enables the user to tune HF horizontal dispersion to match the application.

ID24 directivity can be changed in seconds

A unique user-rotatable horn lets ID24 users quickly select between two preset directivity options. A selection of horns can be specified for HF dispersion angles including 60° x 60°, 90° x 40°, 120° x 40° and 120° x 60°.



Horizontal rotation



Vertical rotation



Horn rotator (using a screw driver)

Speakers a la carte

Fixed installation or mobile connectivity. Black, white or custom RAL colours. ID Series makes it easy to spec the right speakers for the application.



The ID Series makes a powerful sonic statement through the combination of rich, full range sound and uniform venue coverage. But visually, it's all about keeping a much lower profile.

Touring versions of the ID14 and ID24 feature Magnelis steel grilles and are available in black, white or custom RAL colours. Installation versions use an acoustic cloth over the front of the grilles and are also available in black, white or custom RAL colours. In addition, an 'A la carte' version of the ID24 enables system designers to specify cabinet colours so speakers blend into their surroundings, and to choose from a range of rotatable horns for additional directivity options.

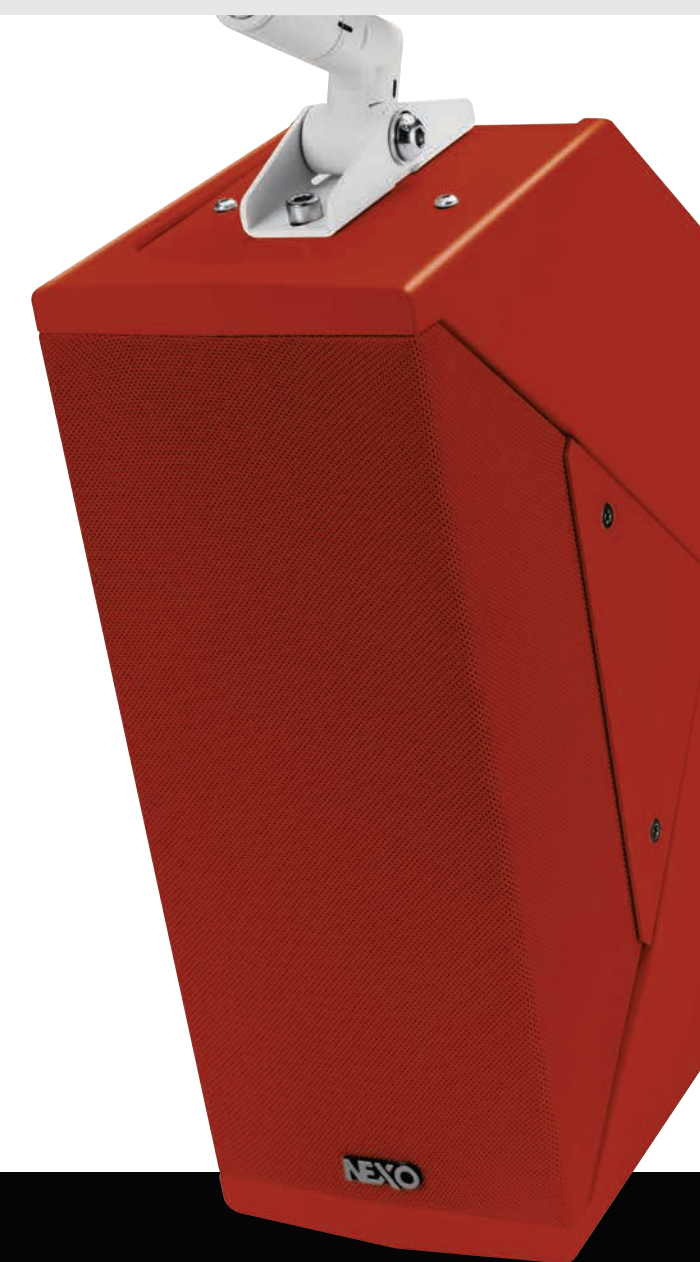
Connectivity on the touring versions is via two Speakon connectors on the rear plate, while Installation versions use a cable gland with a 2 core cable for audio input, ensuring IP55 protection.



Captive 2-core cable connectivity on installation versions (ID24 shown)



Speakon connectivity on touring versions (ID24 shown)



ID Series Subs

Complementing the ID Series speakers are three compact, powerful subs, all available in install and touring versions.

With a low-profile, sleek design, IDS110 and IDS210 subs are easily installed discretely in a wide range of locations - within walls, staircases, under furniture and more. The IDS108 is the perfect partner for the ID14, creating a compact and powerful 3-way full-range system.



IDS110 - 1x10" sub



IDS210 - 2x10" sub



IDS108 - 1x8" sub



Comprehensive rigging solutions

ID Series installation and touring versions feature an appropriate range of M6 and M10 threaded inserts to facilitate a wide range of mounting options.



Corporate & Public Spaces



Theatres



Bars & Restaurants



Houses of Worship



ID14 Wall mounting

M6 inserts with a 73 mm pitch are ready to receive NEXO wall mounting accessories (see page 11).



ID14 Pole-mounting

The ID14 can be pole-mounted on the IDS108 sub for mobile applications.



ID14 Sub mounting

The ID14 can also be mounted directly onto the IDS108 sub.



ID14 Mic stand mounting

A threaded M10 on each side of the ID14 enables mounting on a microphone stand.



ID14 Stage front-fill

Use ID14 to 'beam' sound into the first rows of the audience from the stage, ensuring total coverage and the best listening experience throughout a venue.



ID14 Bracket-mounting

U-Bracket can be used to mount ID14 to a variety of structures and surfaces.



ID24 Horizontal mounting

Compact and powerful, ID speakers and subs are ideal for discreet horizontal placement, bracketed to walls or ceilings.



ID24 Vertical mounting

With innovative V formation drivers, ID24 is equally at home whether mounted horizontally or vertically.



ID24 Under-balcony

Ideal for theatre applications, ID24 units can be used under balconies to reach the audience areas that the main system does not cover.



ID24 Stage front-fill

Use ID24 to 'beam' sound into the first rows of the audience from the stage, ensuring total coverage and the best listening experience throughout a venue.



ID24 Pole-mounting

For touring applications, ID24 can be quickly and easily pole-mounted using the optional IDT-TVP mounting bracket.



ID24 Flown and wedge

For live sound applications, ID24 is a single box solution that can be flown or even used as a wedge thanks to its innovative angled design.

Plug & Play Power and Processing

A choice of compact, cost-effective 4-channel amplification and processing solutions feature phase-coherent presets for all directivity versions of all ID Series speakers.



With DSP presets for all directivity versions of ID Series cabinets and subs, NEXO powered controllers make it easy for designers to create the perfect system, either from the ID Series exclusively or by combining cabinets from different ranges to perform specific functions; eg powering a main system along with under-balcony fills or installations of speakers in different venue zones.

NXAMPMK2

The result of a close collaboration between NEXO and Yamaha and available in 4 x 1300 Watts, 4 x 2500 Watts and 4 x 4500 versions, NXAMP_{MK2} is the perfect, light weight, 'Plug & Play' power and control solution for larger NEXO loudspeaker systems. Achieving significant



Power up to 16 ID Series units from a single NXAMP4X1MK2

advances in sound quality over previous generation NXAMPs, the NXAMP_{MK2} features 4 x ultra-low distortion Class D amplifiers and PFC (Power Factor Correction) technology, with all essential parameters accessible via a large colour touchscreen on the front panel.

A native dual Ethernet card facilitates remote control and daisy-chaining of amplifiers and seamless integration with NEXO's NeMo amplifier management software, with optional Dante, EtherSound and AES network cards also available. NXAMP_{MK2} can also be controlled directly from Yamaha digital mixing consoles and is included in Yamaha's ProVisionaire control and monitoring software for installed systems.

ProVisionaire



DTD/DTDAMP

Ideal for powering fixed installations of NEXO ID Series systems, the 4-channel, 1U rack-mounting DTDAMP is available in two versions: 4 x 700 Watts and 4 x 1300 Watts. The DTDAMP partners perfectly with NEXO's DTD Controller to create a compact, light-weight, intelligent powering and control solution that's easy to configure and operate.

Available in touring and installation versions, the DTD Controller can also be used with third party amplifiers and is particularly useful where the system may be used by multiple operators with limited technical knowledge.



DTD-T touring version



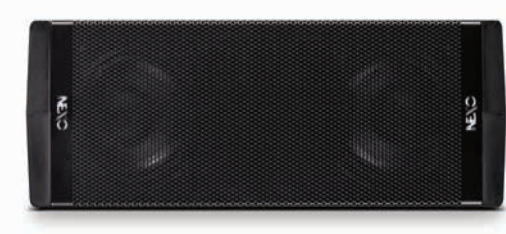
The DTD-T touring version features analog input and output connectors on the front panel, removing the need for an additional patch panel

DTD-I install version



With all connectors except mini-USB located on the back panel, the DTD-I install version is set up from a Mac/PC computer

Specifications



ID24 compact full-range speaker

309mm wide, 132mm high and 233mm front to back, the ID24 is a compact full range speaker using twin 4 inch drivers in a V formation plus an HF compression driver with rotatable horn. The horn can be rotated easily without the need for tools by a ‘screw head’ on the rear panel to give 120° x 40° or 40° x 120° HF coverage with the standard horn fitted. This increases the flexibility of the cabinet by allowing the HF horizontal dispersion to be ‘tuned’ for the given application – installed or touring.

ID24 with NEXO TDController setup			
	ID24i	ID24t	ID24c
Frequency Range	95Hz – 20kHz (+/- 6dB)		
Sensitivity (1W / 1m)	100dB SPL Nominal		
Peak SPL Level (1m)	126dB Peak		
HF Dispersion (according to horns)	Selection of: 60° x 60° 90° x 40° 120° x 40° 120° x 60°		
Nominal Impedance	16Ω		
Recommended Amplification per box	200 to 500W		

Product Features			
	ID24i	ID24t	ID24c
Components	LF: 2x4" – Long excursion – Neodymium magnet HF: 1" voice coil ½" throat – Neodymium magnet		
Height x Width x Depth	132 x 309 x 233mm (5.2" x 12.2" x 9.2")		
Weight	6 Kg (13 lbs)		
Material	Water-resistant Polyurethane		
Finish	White: Structural paint Black: Raw sandblasted polyurethane		A la carte
Grille	Stainless steel Acoustic fabric, black or white	Stainless steel Black paint	A la carte
Rigging	6x 6mm threaded inserts	6x points for quick rigging M10 threaded insert	A la carte, among: 6x inserts 6mm 6x points for quick rigging M10 threaded insert

System Operation	
Electronic Controllers	NXAMP4X1MK2, NXAMP4X2MK2 and NXAMP4X4 Powered Controller DTD - Controller + DTDamp 4x0.7 DTD - Controller + DTDamp 4x1.3 The NEXO controller presets are precisely matched to the ID Series cabinets and include sophisticated protection. Using ID Series cabinets without properly connected NEXO controllers will result in poor sound quality and can damage components.
Sub Bass	IDS110 and IDS210 low profile subwoofers

As part of a policy of continual improvement, NEXO reserves the right to change specifications without notice.



ID14 compact full-range speaker

130mm wide, 130mm high and 120mm front to back, the ID14 is a super-compact full range speaker using a single coaxial 4 inch driver with 1.4-inch Neodymium HF. Available in touring and installation versions, the ID14 can be specified with 100° x 100° or 90° x 140° HF dispersion.

ID14 with NEXO Processing	
Frequency Response @-6 dB	95 Hz to 20 kHz
Sensitivity 1W@1m	95 dB
Peak SPL@1m	116 dB
Available Crossover Frequencies	120 Hz, 150 Hz
HF Dispersion (upon ordering)	100° x 100° or 90° x 140°
Nominal Impedance	16Ω
Recommended Power	110 to 180 Watts / 16 Ohms (requires a 220 to 360 Watts / 8 Ohms amplifier)

Product Features	
Number of ways	2 ways passive
Components	1 x Coaxial Neodymium LF 4" long excursion & HF 1.4" diaphragm
Connectors (Touring version)	2 x NL4, 4 poles connectors (1+/1- Through / 2+/2- ID14)
Connectors (Install version)	1 x Cable gland with 2 cores cable
Rigging points	1 x M10 on each side for dedicated U bracket + 2 x M6 / 73 mm pitch at the back
Construction	Polyurethane
Finish	Black: Raw sandblasted polyurethane / White: Structural paint
Front Finish (Touring version)	Magnelis® front grill with back mesh
Front Finish (Install version)	UV Resistant acoustic fabric fitted Magnelis® front grill
Operating temperature range	0°C - 40 °C (32° F - 104° F)
Storage temperature range	-20 °C - 60 °C (-4 ° F - 140° F)
Height x Width x Depth	130 mm x 130 mm x 120 mm (5.1" x 5.1" x 4.7")
Weight: Net	1.7 kg (3.7 lbs)

System Operation	
Recommended powering solution	DTDcontroller + DTDAMP4x0.7 : up to 4 x ID14 per channel
Optional powering solution	DTDcontroller + DTDAMP4x1.3 : up to 4 x ID14 per channel NXAMP4x1mk2 Powered TDcontroller: up to 8 x ID14 per channel NXAMP4x2mk2 Powered TDcontroller: up to 8 x ID14 per channel NXAMP4x4mk2 Powered TDcontroller: up to 8 x ID14 per channel

IDS108, IDS110 and IDS210 subs

There are 1x10" and 2x10" subs available to complement the ID24. Both are low-profile. The 1x10" measures 285mm high x 525mm wide x 550mm deep, and the 2X10" is 285mm high x 1050mm wide x 550mm deep. Partnering the ID14 is the 1x8" IDS108, measuring 305mm high x 307mm wide x 305mm deep.



IDS108, IDS110 and IDS210 with NEXO Controller setup			
	IDS110	IDS210	IDS108
Frequency Range @-6 dB	43 Hz to 130 Hz (+/- 3dB)	43 Hz to 130 Hz (+/-3dB)	50 Hz to 150 Hz
Sensitivity (1W@1m)	97 dB SPL Nominal	103 dB SPL Nominal	95 dB
Peak SPL Level (1m)	125 dB Peak	131 dB Peak	122 dB
Crossover Frequencies	85 Hz / 120 Hz	85Hz / 120 Hz	50-120 Hz, 50-150 Hz
Nominal Impedance	4Ω	2Ω	8Ω
Recommended Amplification	400W to 650W	800W to 1300W	350 to 550 Watts / 8 Ohms

Product Features			
	IDS110	IDS210	IDS108
Components	1x10" Long excursion	2x10" Long excursion	1 x 8" 8 Ohms Long excursion Neodymium driver
Height x Width x Depth	285 x 525 x 550 mm (11.2" x 20.7" x 21.7")	285 x 1050 x 550 mm (11.2" x 41.3" x 21.7")	305 x 307 x 305 mm (12.0" x 12.1" x 12.0")
Weight	21kg (47 lbs)	37 kg (82 lbs)	8 kg (17.6 lbs)
Material	Finnish birch plywood	Finnish birch plywood	Baltic Birch Plywood
Finish	Black structured paint	Black structured paint	Black or White structural paint
Rigging	4x M6 inserts M20 flange (t version only)	4x M6 inserts M20 flange (t version only)	2x M10 Threaded inserts + 2 x M6 threaded inserts

System Operation		
Electronic Controllers	NXAMP4X1MK2, NXAMP4X2MK2 and NXAMP4X4 Powered Controller DTD - Controller + DTDamp 4x0.7 (IDS110 only) DTD - Controller + DTDamp 4x1.3 (IDS110 only) The NEXO controller presets are precisely matched to the ID Series cabinets and include sophisticated protection. Using ID Series cabinets without properly connected NEXO controllers will result in poor sound quality and can damage components.	DTDcontroller+DTDAMP4x0.7: up to 2xIDS108 per channel DTDcontroller+DTDAMP4x1.3: up to 2xIDS108 per channel NXAMP4x1mk2 Powered TDcontroller: up to 3xIDS108 per channel NXAMP4x2mk2 Powered TDcontroller: up to 4xIDS108 per channel NXAMP4x4mk2 Powered TDcontroller: up to 4xIDS108 per channel
Main System	ID24	

Architectural and engineering specifications are available at www.nexo-sa.com

Touring and Installation Accessories

ID24 Touring Accessories



IDT-TCBRK2538
Truss Clamp Adaptor.
25-38mm.



IDT-TCBRK3851
Truss Clamp Adaptor.
38-51mm.



IDT-QRA
IDT-QRA-PW
Black or White
Truss Clamp Fitting.



IDT-TVP
Bolt Adaptor
M10 to 35mm.



IDT-GSTK
Ground Stacking
Accessory.



IDT-HBRK24
IDT-HBRK24-PW
Black or White U
Bracket for ID24
(Serial Number
>10000 Only).



IDI-WM01
IDI-WM01-PW
Black or White
Speaker Wall
Mount.



IDI-WB02
IDI-WB02-PW
Black or White
Universal Speaker
Wall Mount.



IDI-HBRK24
IDI-HBRK24-PW
Black or White U
Bracket for ID24
(Serial Number
>10000 Only).

ID24 Installation Accessories

ID14 Accessories



IDI-WM01
IDI-WM01-PW
Black or White
Speaker Wall
Mount.



IDI-WB02
IDI-WB02-PW
Black or White
Universal Speaker
Wall Mount.



IDT-HBRK14
IDT-HBRK14-PW
U Bracket for ID14.



IDT-GSTK14
Ground Stacking
Accessory for ID14.



IDT-4CASE14
Flight Case for 4x
ID14.



IDT-HBRK108
U Bracket for
IDS108.



IDI-14T0108
L Bracket for ID14
/ Link ID14 to
IDS108.



IDT-2CASE108
Flight case for 2x
IDS108.

IDS108 Accessories

NEXO

Parc d'Activité
du Pré de la Dame Jeanne
B.P.5
60128 Plailly
FRANCE
Tel: +33 (0)3 44 99 00 70
Fax: +33 (0)3 44 99 00 30
E-mail: info@nexo.fr

