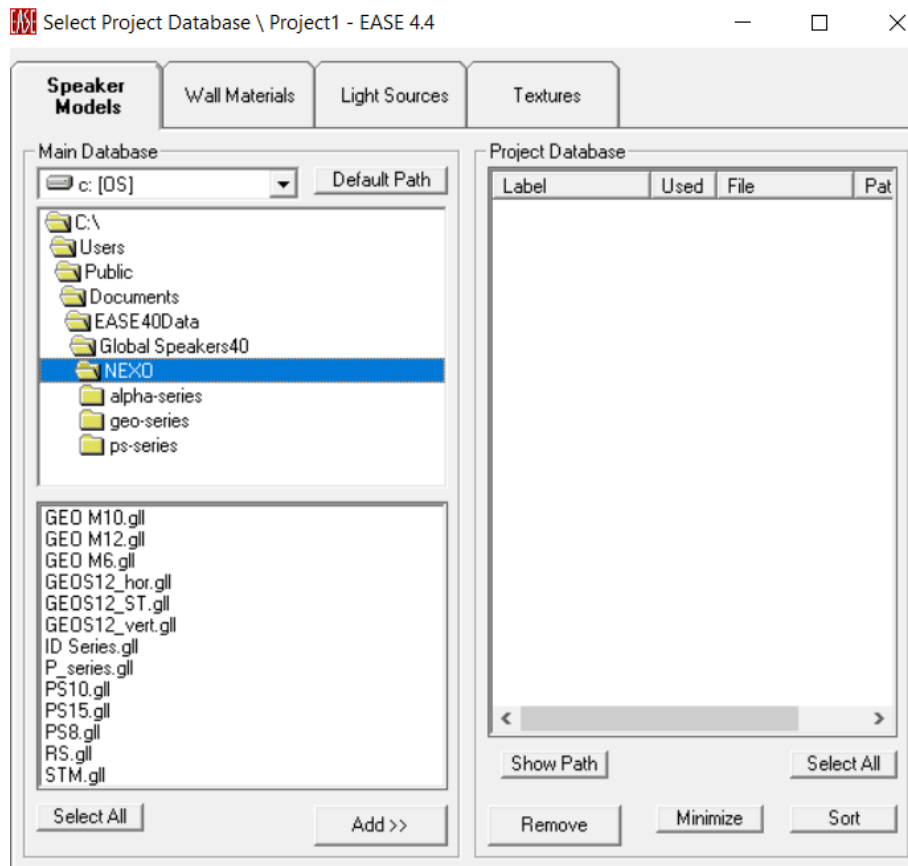


EASE 4.4 FILES FOR NEXO SPEAKER SYSTEMS

INSTALLATION

Create a NEXO sub-directory in ... EASE40Data\Global Speakers40\ folder and copy all GLL files into it.



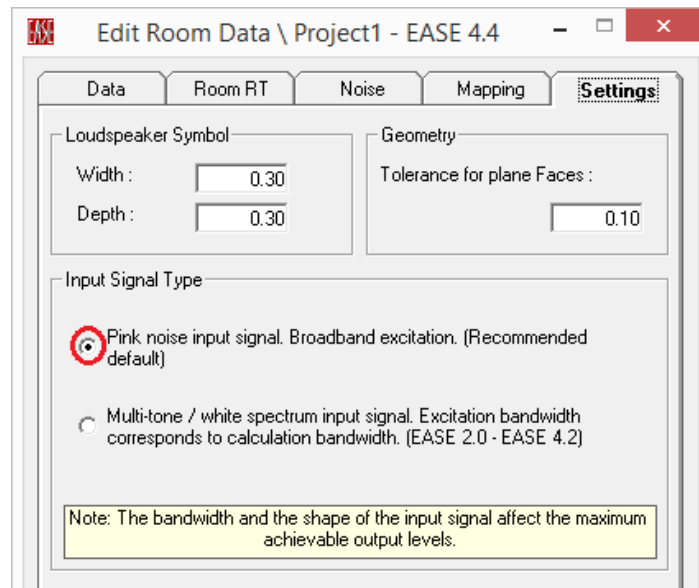
NEXO EASE 4.4 GLL FILES

Enclosed GLL files cover the full NEXO speaker catalogue as of today:

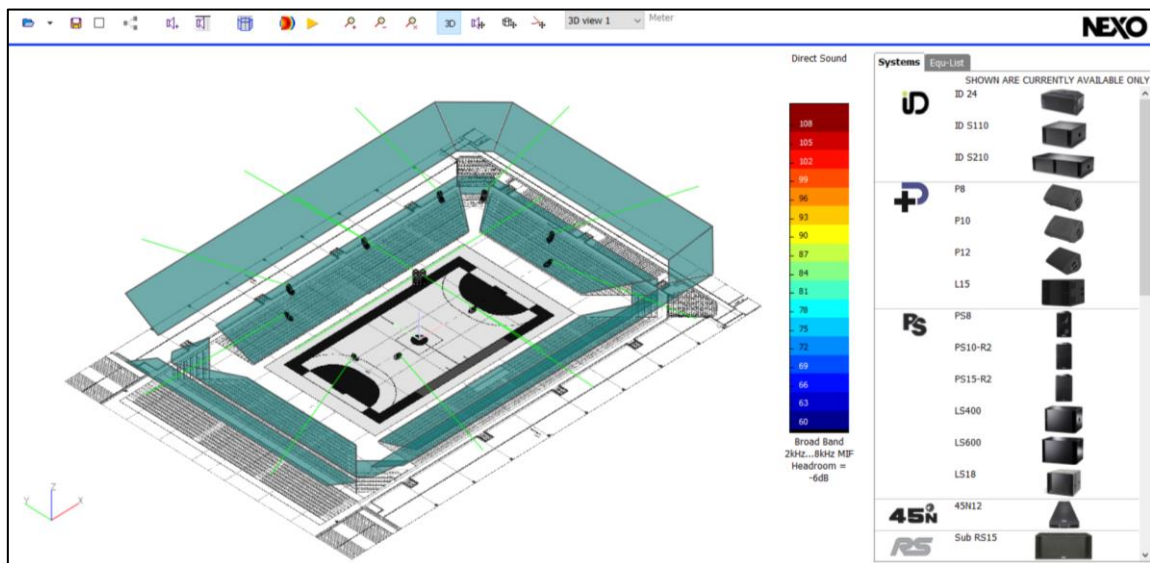
GLL FILE	CONTENT
PS8.gll	GLL files for PS8 and LS400
PS10.gll	GLL files for PS10 and LS600
PS15.gll	GLL files for PS15 and LS18
P_Series.gll	GLL files for P8, P10, P12, P15, L15 and L18
ID_Series.gll	GLL files for ID14, ID24, IDS108, IDS110 and IDS210
GEOS12_vert.gll	GLL files for GEOS12 flown or stacked vertical arrays
GEOS12_hor.gll	GLL files for GEOS1230 flown horizontal arrays
GEOS12_ST.gll	GLL files for GEOS12-ST flown arrays
GEO M6.gll	GLL files for GEOM6 and MSUB12 arrays
GEO M10.gll	GLL files for GEOM10 and MSUB15 arrays
GEO M12.gll	GLL files for GEOM12 and MSUB18 arrays
STM.gll	GLL files for STM arrays
RS.gll	GLL files for RS15 and RS18 subs

NOTES

- When using NEXO GLL files, *Edit / Room data / Settings / Input Signal Type* must be selected to "Pink noise input signal. Broadband excitation."



- NEXO NS1 simulation software must be used prior to EASE modelling in order to optimize direct sound coverage from GEO and STM systems. NS1 simulation software is available on <https://www.nexo-sa.com/software/>



- Make sure that the angles of the speakers are properly applied in arrays. Re-click on every angle tab and check that the angles are correctly displayed on the graph.
- Set the gain to 0dB to get the same SPL values in EASE and NS1 for one octave band calculations. For broadband (dBA) calculations there may be some small variations due to the different frequency bands taken into account in EASE and NS1.
- Since no computation is available in EASE 4.4 below 100 Hz, NEXO subwoofers are only included in the GLL files for display (RS Subs, LS Subs, ID Subs, M Subs, L Subs and S118).
- Bug reporting: technical@nexo.fr

USER NOTES

NEXO S.A.

Parc d'activité de la Dame Jeanne
F-60128 PLAILLY

Tel: +33 3 44 99 00 70
Fax: +33 3 44 99 00 30
E-mail: info@nexo.fr
nexo-sa.com

